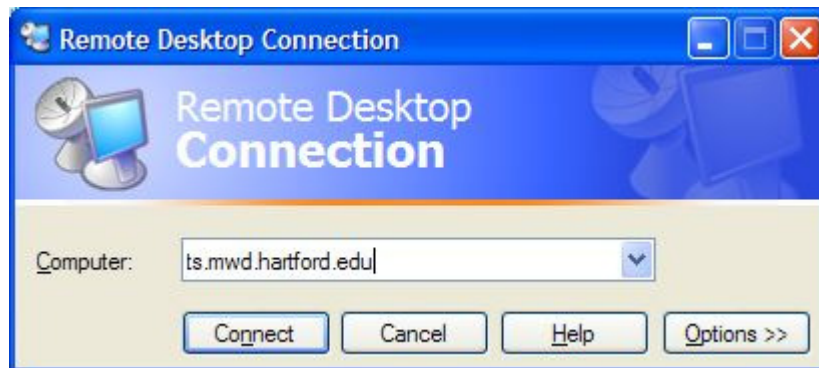


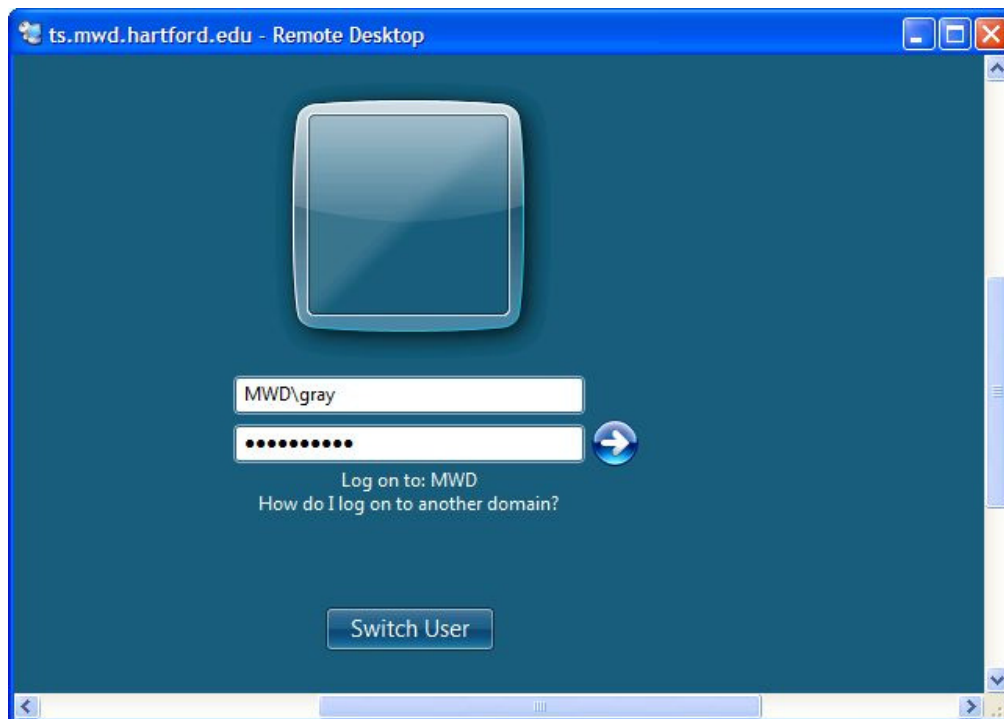
Using the MWD Terminal Server

A terminal server is a specialized, networked computer that connects many **remote** terminals to a LAN through one network connection. When you are using the terminal server you have access to the LAN (and its software) as if you were logged in locally. MWD supports a terminal server.

Anyone that has an account in MWD should be able to access our system using our terminal server. To access the terminal server, in a Windows environment, use the **Remote Desktop Connection**



The terminal server computer is: ts.mwd.hartford.edu. Once you have connected select to log on as **Other User**. On the screen similar to the one below.



use **your** MWD login and password to complete the process. Note the use of the MWD\ to indicate the Windows domain for MWD.

When you are done with your remote connection **it is important to log off.**

At the **bottom left hand side** of the of the Remote Desktop window click on **[Start]**; then on the small submenu that is displayed select **[>]** and from that menu click on **[Log Off]** to complete the process.

